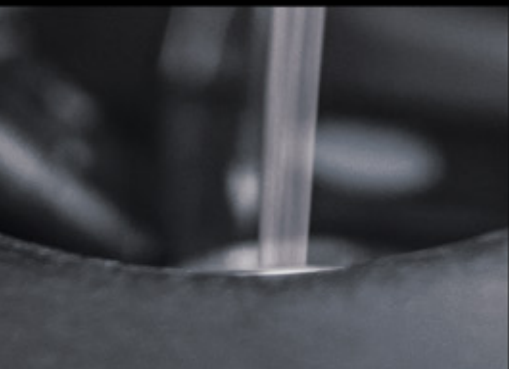




# AUTOMOTIVE & COMMERCIAL

---

## LUBRICATION GUIDE





# Bel-Ray®

For over 75 years, Bel-Ray products have proven their value, setting the highest standards of quality and performance. A leader in lubrication technology, our products have been engineered to protect while delivering superior business value for applications in aerospace, automotive, energy, food, marine, military, mining, motorcycle, OEM, powersports, steel and textile and other industries served by our Marine, Powersports, Industrial and Mining Divisions.

## Calumet Specialty Products Partners, L.P.

Calumet Specialty Products Partners, L.P. (NASDAQ: CLMT) is a master limited partnership and a leading independent producer of high-quality, specialty hydrocarbon products in North America. Calumet processes crude oil and other feedstocks into customized lubricating oils, solvents and waxes used in consumer, industrial and automotive products; produces fuel products including gasoline, diesel and jet fuel; and provides oilfield services and products to customers throughout the United States. Calumet is based in Indianapolis and produces nearly 3,500 unique specialty products used in the development of the world’s most trusted brands and products. Calumet is vertically integrated and holds a comprehensive portfolio of branded products for use in commercial, industrial, and consumer applications. Headquartered in Indianapolis, Indiana, the company employs approximately 1600 people and operates 11 facilities across North America. Calumet products and services are available in approximately 52 countries across the world; serving approximately 4,400 customers globally.

Calumet acquired Bel-Ray in December of 2013.



# MOTOR OILS



## BRX™ Elite Full Synthetic Motor Oil

Bel-Ray® BRX Elite Full Synthetic Motor Oil is formulated from select full-synthetic base stocks and advanced additive technology to deliver trusted engine protection and peak vehicle performance. Bel-Ray BRX Elite Full Synthetic Motor Oil provides aggressive resistance to sludge formation and varnish deposits during stop-and-go driving. Premium synthetic formulation delivers excellent oxidation stability and low volatility properties, resulting in reduced oil consumption between services.

- Optimum fuel economy
- Excellent low-temperature performance for cold starts
- Protects vehicle emission systems
- Advanced shear stability and low volatility properties support extended service intervals
- Improved LSPI protection
- Improved wear performance
- Maximum Engine Protection

| SAE 0W-20   | SAE 5W-20   | SAE 5W-30   | SAE 10W-30  |
|---|---|---|---|
| Quart: 302218150115<br>Drum: 302218150007<br>Bulk: 302218150000 | Quart: 302219150115<br>Gallon: 302219150195<br>Drum: 302219150007<br>Bulk: 302219150000 | Quart: 302220150115<br>Drum: 302220150007<br>Bulk: 302220150000 | Quart: 302232150115<br>Drum: 302232150007<br>Bulk: 302232150000<br>Bag In Box: 301801150033 |

## BRX Elite Full Syn dexos™1 Gen 3 Motor Oil

Bel-Ray BRX Elite Full Syn dexos™1 Gen 3 Motor Oil is formulated from select synthetic base stocks and advanced additive technology approved by General Motors to meet their new Global Motor Oil Specification. BRX Elite Full Synthetic dexos™1\* provides aggressive resistance to sludge formation and varnish deposits during stop-and-go driving. Premium synthetic formulation delivers excellent oxidation stability and low volatility properties, resulting in reduced oil consumption between services. BRX Elite Full Synthetic dexos™1 is recommended for turbo- charged or naturally aspirated gasoline-powered and flex-fuel passenger cars, hybrid vehicles, light trucks, and sport utility vehicles. It exceeds new car warranty requirements as defined by GM dexos™1 – Gen 3, API SP Resource Conserving and ILSAC GF-6A. Always consult your owner’s manual for recommendations.

- Optimum wear protection as established in dexos1, API, and ILSAC testing
- Superior protection from LSPI (Low-Speed Pre-Ignition)
- Optimum fuel economy
- Excellent low-temperature performance for cold starts
- Protects vehicle emission systems
- Advanced shear stability and low volatility properties support extended service intervals
- Outstanding wear performance
- Maximum engine protection

\*dexos™1 is a registered trademark of the General Motors Corporation.

| SAE 0W-20   | SAE 5W-30   |
|---|---|
| Quart: 301239150115<br>Gallon: 301239150195<br>Drum: 301239150007<br>Tote: 301239150316<br>Bulk: 301239150000<br>Bag In Box: 301239150033 | Quart: 300881150115<br>Gallon: 300881150195<br>Drum: 300881150007<br>Tote: 300881150316<br>Bulk: 300881150000<br>Bag In Box: 300881150033 |



## BRX Elite Eurosyn Motor Oil

Bel-Ray BRX Elite Eurosyn Motor Oil is formulated exclusively with premium synthetic base stocks and advanced additive technology to deliver trusted engine protection and peak vehicle performance. Bel-Ray BRX Elite Eurosyn Motor Oil provides aggressive resistance to sludge formulation and varnish deposits during stop-and-go driving under severe operating conditions. Premium synthetic formulation delivers excellent oxidation stability and low volatility properties, resulting in reduced oil consumption between services.

- Excellent wear protection to protect critical engine components
- Optimum fuel economy
- Excellent low-temperature performance for cold starts
- Long-lasting protection of vehicle emission systems
- Excellent oxidation stability supports extended service intervals

| SAE 5W-40                |
|--------------------------|
| Bag In Box: 301803150033 |





# BRX™ Synthetic Blend Motor Oil



Bel-Ray® BRX Synthetic Blend Motor Oil iis formulated from premium synthetic-blend base stocks and advanced additive technology to deliver trusted engine protection and peak vehicle performance. Bel-Ray BRX Synthetic Blend Motor Oil provides added resistance to sludge formation and varnish deposits during stop-and-go driving and maintains outstanding wear protection under severe conditions.

- Excellent wear protection for critical engine components
- Improved fuel economy
- Delivers excellent low-temperature performance
- Maintains maximum engine protection under severe operating conditions
- Protects vehicle emission systems
- Improved LSPI protection
- Improved wear performance

| SAE 5W-20   | SAE 5W-30   | SAE 10W-30  | SAE 10W-40          | SAE 20W-50          |
|---|---|---|---------------------|---------------------|
| Quart: 302228150125<br>Drum: 302228150007<br>Bulk: 302228150000<br>Bag In Box: 300947150033 | Quart: 302229150125<br>Drum: 302229150007<br>Bulk: 302229150000<br>Bag In Box: 301107150033 | Quart: 302235150125<br>Drum: 302235150007<br>Bulk: 302235150000<br>Bag In Box: 301371150033 | Quart: 302236150125 | Quart: 302237150125 |

# BRX-HM™ High Mileage Motor Oil



Bel-Ray BRX-HM High Mileage Motor Oil is specially formulated from a proprietary combination of premium synthetic-blend base stocks and advanced additive technology to deliver superior protection to mature vehicles with 75,000 miles or more on the odometer. Bel-Ray BRX-HM High Mileage Motor Oil features a state-of-the-art additive system that contains active cleaning agents that maintains performance in older engines.

- Superior wear protection for older engines
- Protects against oil burn-off and consumption between services
- Minimizes vehicle exhaust smoke
- Maximum resistance to high-temperature thermal breakdown
- Maximizes mature vehicle performance
- Improved LSPI protection
- Improved wear performance
- Increased fuel economy

| SAE 5W-20                | SAE 5W-30                | SAE 10W-30               |
|--------------------------|--------------------------|--------------------------|
| Bag In Box: 301372150033 | Bag In Box: 301812150033 | Bag In Box: 301371150033 |

# TRANSMISSION FLUIDS



# ATF-MV Full Synthetic Multi-Vehicle ATF

Bel-Ray® ATF-MV Full Synthetic Multi-Vehicle ATF is formulated from premium synthetic base stocks and a state-of-the-art additive system to provide ultimate protection and peak performance in automatic transmissions found in passenger cars, flex-fuel vehicles, hybrids, light-trucks, and sport utility vehicles.

- Excellent frictional properties for smooth shifting
- Superior shear stability and wear protection
- Protection against varnish and sludge formation
- Superior thermal stability and oxidation resistance
- Outstanding low-temperature performance

Quart: 302253150115  
Tote: 302253150316  
Bulk: 302253150000  
Bag In Box: 300945150033



# D/M ATF

Bel-Ray D/M ATF is a high performance, automatic transmission fluid designed to meet the service fill requirements for many vehicles. Bel-Ray D/M ATF provides reliable performance including smooth & consistent all weather shifting and all-around lubrication protection of the transmission components. Use of Bel-Ray D/M ATF can lead to dependable longer transmission service life and a smooth driving experience.

- Excellent thermal and oxidation stability for long and consistent transmission performance
- Friction modifiers improve transmission efficiency and shifting performance
- Good film-strength and anti-wear properties reduce wear and maintain good transmission life
- Excellent low-temperature properties provide easier start-ups and improved lubrication at low ambient temperatures
- Compatibility with all common seal materials helping the control of oil leakage

Quart: 302256150125  
Bulk: 302256150000



# HD Synthetic Transmission Fluid

Bel-Ray HD Synthetic Transmission Fluid is a premium automatic transmission fluid formulated with select synthetic base stocks and next-generation additive technology. Bel-Ray HD Synthetic Transmission Fluid is specifically designed and recommended for use in heavy-duty automatic transmissions in trucks and buses requiring Allison TES-295 fluid for extended warranty service. It is also recommended for use in transmissions requiring Allison C-4 and Allison TES-389 specifications and exceeds extended drain requirements of Voith and ZF transmissions. Bel-Ray HD Synthetic Transmission Fluid also exceeds performance requirements of demanding automotive applications such as taxi cabs, police cars, delivery trucks, recreational vehicles and tow-trucks and provides added protection, extended service intervals and extends the service life of critical transmission components.

- Extended drain protection
- Excellent frictional properties for smooth shifting
- Excellent anti-shudder performance
- Superior anti-wear protection for critical transmission components
- Protection against transmission varnish and sludge formation
- Superior thermal stability and oxidation resistance
- Outstanding low-temperature performance

Drum: 302255150007  
Tote: 302255150316  
Bulk: 302255150000



# BAG IN BOX

## BRX™ Elite Full Synthetic Motor Oil

**SAE 10W-30**

301801150033

## BRX Elite Full Syn dexos™1 Gen 3 Motor Oil

**SAE 0W-20** | **SAE 5W-30**

301239150033

300881150033

## BRX Elite Eurosyn Motor Oil

**SAE 5W-40**

301803150033

## BRX Synthetic Blend Motor Oil

**SAE 5W-20** | **SAE 5W-30** | **SAE 10W-30**

300947150033

301107150033

301363150033

## BRX-HM High Mileage Motor Oil

**SAE 5W-20** | **SAE 5W-30** | **SAE 10W-30**

301372150033

301812150033

301371150033

## Hyperion® Synthetic Blend CK-4 Motor Oil

**SAE 15W-40**

302334150033

## ATF-MV Full Synthetic Multi-Vehicle ATF

300945150033



### The Bag In Box packaging is engineered to:

- Withstand tough transportation delivery scenarios
- Drain with minimal residual oil left behind
- Help reduce plastic landfill waste vs. traditional 1-quart bottles
- Easily compact and recycle
- Allow quick inspection of inventory
- Offer a wide range of specialty oils with added convenience
- Improve operational efficiency by reducing time lost retrieving bottles off of the shelf and the cost associated with waste removal – real labor savings

### Bag In Box Rack

6221534





# HEAVY DUTY

## Hyperion® Elite Synthetic CK-4/SN Motor Oil

Bel-Ray® Hyperion Elite Synthetic CK-4/SN 5W-40 is formulated for use in high-speed four-stroke cycle diesel engines designed to meet 2017 model year on-highway and Tier 4 non-road exhaust emission standards as well as for previous model year diesel engines. This oil is formulated to use in all applications with diesel fuels ranging in sulfur content up to 500 ppm. Bel-Ray Hyperion Elite Synthetic CK-4/SN 5W-40 is designed to provide enhanced protection against oil oxidation, viscosity loss due to shear, and oil aeration as well as protection against catalyst poisoning, particulate filter blocking, engine wear, piston deposits, degradation of low- and high-temperature properties, and soot-related viscosity increase.

- Protects emission control systems
- Outstanding oxidation stability
- Full Synthetic formulation
- Universal product for mixed fleet operations
- Excellent low temperature properties helps speed cold starts

### SAE 5W-40

Drum: 302189150007  
Bulk: 302189150000

## Hyperion Synthetic Blend CK-4 Motor Oil

Bel-Ray Hyperion Synthetic Blend CK-4 is formulated for use in high-speed four-stroke cycle diesel engines designed to meet 2017 model year on-highway and Tier 4 non-road exhaust emission standards as well as for previous model year diesel engines. This oil is formulated to use in all applications with diesel fuels ranging in sulfur content up to 500 ppm. Bel-Ray Hyperion Synthetic Blend CK-4 is designed to provide enhanced protection against oil oxidation, viscosity loss due to shear, and oil aeration as well as protection against catalyst poisoning, particulate filter blocking, engine wear, piston deposits, degradation of low- and high-temperature properties, and soot-related viscosity increase. SAE 15W-40 meets API SN specifications.

- Protects emission control systems
- Outstanding oxidation stability
- Synthetic Blend formulation
- Universal product for mixed fleet operations
- Excellent low temperature properties helps speed cold starts

| SAE 10W-30   | SAE 15W-40   | API SN |
|--|--|--------|
| Drum: 302559150007<br>Tote: 302559150316<br>Bulk: 302559150000 | Gallon: 302334150195<br>Bag in Box: 302334150033<br>Drum: 302334150007<br>Tote: 302334150316<br>Bulk: 302334150000 |        |

## HD Fleet Motor Oil

Bel-Ray HD Fleet Motor Oil is a premium, heavy-duty engine oil formulated with select base oils and a robust additive system that includes dispersants, detergents, oxidation and corrosion inhibitors, and anti-wear and antifoam agents. These characteristics provide optimum engine cleanliness and reduce port plugging, long lasting soot control, and superior wear protection for critical engine components.

- Superior wear protection for critical engine components
- Added resistance to varnish piston deposits and sludge formation
- Excellent rust and bearing corrosion protection

### SAE 30

Drum: 302263150007  
Bulk: 302263150000

# COMMERCIAL

## GEO LA

Bel-Ray® GEO LA is a premium low-ash, detergent, and dispersant engine oil. It is specially formulated for peak performance and ultimate protection in high-output 4-stroke cycle natural gas engines operating under heavy loads and extreme conditions. Bel-Ray GEO LA, available in SAE grades 40 and 15W-40, meets and exceeds performance requirements as defined by the API classification CF and major engine manufacturer standards.

- Excellent wear protection for critical engine components
- Maximum resistance to sludge and varnish deposit formation
- Protects against valve stem deposits and valve recession
- Maintains optimum engine cleanliness
- Compatible with vehicle emission and catalyst systems
- Reduced maintenance and extended engine life

| SAE 40                                   | SAE 15W-40         |
|--|--------------------|
| Tote: 302311150316<br>Bulk: 302311150000 | Bulk: 302313150000 |

## CD 50 Synthetic Transmission Fluid

Bel-Ray CD 50 Synthetic Transmission Fluid is a full synthetic, SAE 50 transmission lubricant for use in heavy duty manual transmissions. It is designed for extended drain and severe service in heavy-duty manual transmissions.

Bel-Ray CD 50 Synthetic Transmission Fluid contains additives to inhibit oxidation caused by high temperatures, and inhibitors to help prevent rusting and corrosion. The addition of an anti-wear agent reduces component wear, promoting longer transmission and lubricant service life. This additive system also fortifies this product to enable it to protect bearings and synchronizers.

Bel-Ray CD 50 Synthetic Transmission Fluid is formulated from synthetic base stocks having low pour points. The low pour points permit it to flow readily even at sub-zero temperatures and provides easy low temperature shifting. These excellent low temperature properties allow the potential for fuel savings by reducing the drag normally encountered when using a petroleum based lubricant. Less gear wear is another benefit from the use of Bel-Ray CD 50 Synthetic Transmission Fluid, because vital transmission parts are lubricated quickly and properly when the lubricant is cold. The synthetic base stocks used are highly stable when exposed to severe heat, oxidation and shear conditions. These characteristics result in exceptional lubrication at high temperature and permit extended drain intervals.

### SAE 50

Pail: 302542150019





# GEAR OILS



## Synthetic GL-5 Gear Oil

Bel-Ray® Synthetic GL-5 Gear Oil is designed to provide superb performance for automobiles, light and heavy duty trucks and various industrial equipment when API Service Classification GL-5 and/or MT-1 is specified. This product is formulated with synthetic base stocks that have outstanding thermal oxidation stability. The additive system provides extreme pressure characteristics, anti-wear performance, rust and corrosion prevention and anti-foaming tendencies.

Bel-Ray Synthetic GL-5 Gear Oil is available in SAE grades 75W-90 and 75W-140, and exceeds performance requirements as defined by API classifications GL-5 and MT-1.

- Outstanding low-temperature shifting performance
- Maximum resistance to oxidation, sludge and varnish formation
- Protection against gear rust and corrosion
- Optimum fuel economy
- Superior wear protection for critical gear components
- Smooth shifting operation

| SAE 75W-90 | SAE 75W-140 |
|------------|-------------|
|------------|-------------|

|  |                    |
|--|--------------------|
| Pail: 302242150019<br>Tote: 302242150316<br>Bulk: 302242150000 | Pail: 302243150019 |
|--|--------------------|



## GL-5 Gear Oil

Bel-Ray GL-5 Gear Oil is designed to provide superb performance for automobiles, light and heavy duty trucks and various pieces of industrial equipment when API Service Classification GL-5 and MT-1 are specified. This product is created with quality base stocks that have outstanding thermal oxidation stability. The additive system provides extreme pressure characteristics, anti-wear performance, rust and corrosion prevention and anti-foaming tendencies.

Bel-Ray GL-5 Gear Oil is available in SAE grades 80W-90 and 85W-140, and exceeds performance requirements as defined by API classifications GL-5 and MT-1.

- Outstanding low-temperature shifting performance
- Maximum resistance to oxidation, sludge and varnish formation
- Protection against gear rust and corrosion
- Optimum fuel economy
- Superior wear protection for critical gear components
- Smooth shifting operation

| SAE 80W-90 | SAE 85W-140 |
|------------|-------------|
|------------|-------------|

|  |  |
|--|--|
| Quart: 302241150125<br>Pail: 302241150019<br>Keg: 302241150012<br>Drum: 302241150003<br>Tote: 302241150316<br>Bulk: 302241150000 | Quart: 302230150125<br>Pail: 302230150019<br>Keg: 302230150012<br>Drum: 302230150003<br>Bulk: 302230150000 |
|--|--|

# MISCELLANEOUS OILS



## Premium Universal Tractor Fluid

Bel-Ray® Premium Universal Tractor Fluid is a high quality, specially designed lubricant containing anti-rust, anti-foam and oxidation inhibitors, plus other additives necessary for the wide range of applications recommended by various tractor manufacturers. The product is an all-season type of oil that resists thickening in cold weather and thinning in the heat of the summer. It is manufactured with detergents to keep transmissions clean and maintain hydraulic control circuit in perfect working condition, and provides excellent protection against seal and pump deterioration. Operators will appreciate the multipurpose application of Bel-Ray Premium Universal Tractor Fluid for transmissions, final drives, and hydraulic systems of tractors.

- Excellent gear, bearing and pump wear protection
- Multi-functional fluid
- Oxidation and thermal stability for long life
- Excellent rust and corrosion protection
- Reduces brake chatter
- Compatibility with oil seal materials used in transmission and hydraulic systems

Pail: 302224150017  
Bulk: 302224150000



## Hi-Tac Bar & Chain Oil

Bel-Ray Hi-Tac Bar & Chain Oil is designed to prevent rusting and reduce wear and linkage breakage thus extending bar and chain life. Penetration into rivet holes and the bar channel is assured. Designed especially for lubrication of bar and chain saws and open or enclosed chains on motorcycles, snowmobiles, and lawn and garden equipment. Additional benefits include high load carrying capacity minimizing wear of bar and chain, reduced throw off and heat build-up, and rust and corrosion protection.

- Extended saw bar and chain life
- Maximum wear protection for critical components
- Excellent resistance to equipment rust

Gallon: 302431150190



## Premium AW Hydraulic Fluid

Bel-Ray Premium AW Hydraulic Fluid is a special hydraulic fluid formulated from highly-refined base stocks and an advanced additive system to deliver ultimate equipment protection with extended service intervals. Bel-Ray Premium AW Hydraulic Fluid delivers optimum fluid performance over a wide-range of operating temperatures and conditions. It also exhibits excellent demulsification (water separation) properties, even at high operating temperatures and operating pressures.

- Ultimate wear protection for critical system components
- Ultimate resistance to rust and oxidation
- Maximum protection and peak performance under heavy-loads
- Excellent water separating properties
- Smooth hydraulic operation through rapid air release
- Extended equipment service intervals

| ISO 22             | ISO 32   | ISO 46   | ISO 68   |
|--------------------|--|--|--|
| Bulk: 302122150000 | Pail: 302123150017<br>Drum: 302123150007<br>Tote: 302123150316<br>Bulk: 302123150000 | Pail: 302124150017<br>Drum: 302124150007<br>Tote: 302124150316<br>Bulk: 302124150000 | Pail: 302125150017<br>Drum: 302125150007<br>Tote: 302125150316<br>Bulk: 302125150000 |



 /belraycompany

 @bel\_ray

 @bel\_raycompany

# belray

**BELRAY.COM**

Calumet Branded Products, LLC  
2780 Waterfront Pkwy. E. Dr., Suite 200  
Indianapolis, IN 46214  
Technical Services: 317-328-5660

© 2023 Calumet Branded Products, LLC

Rev. 4/23